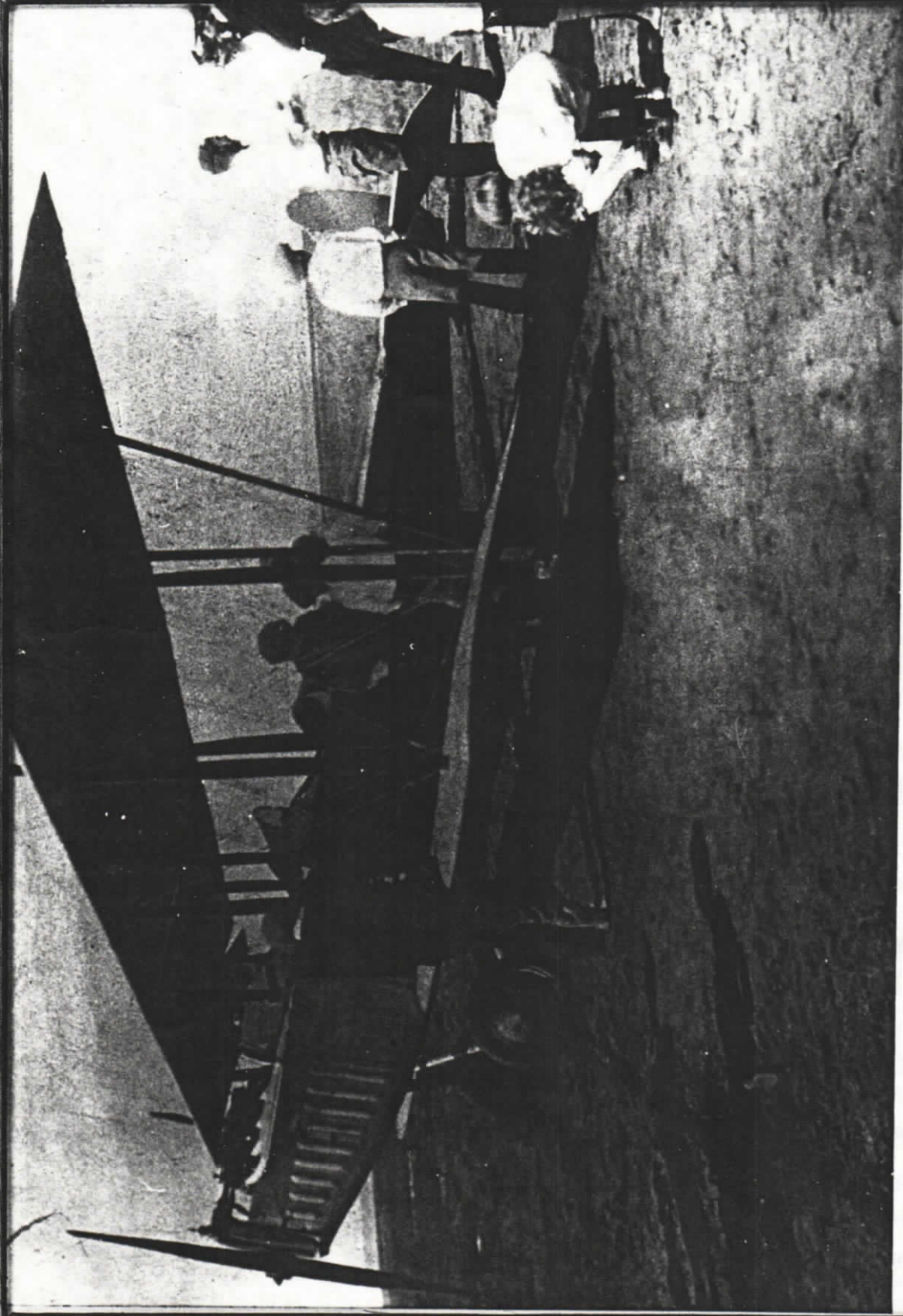
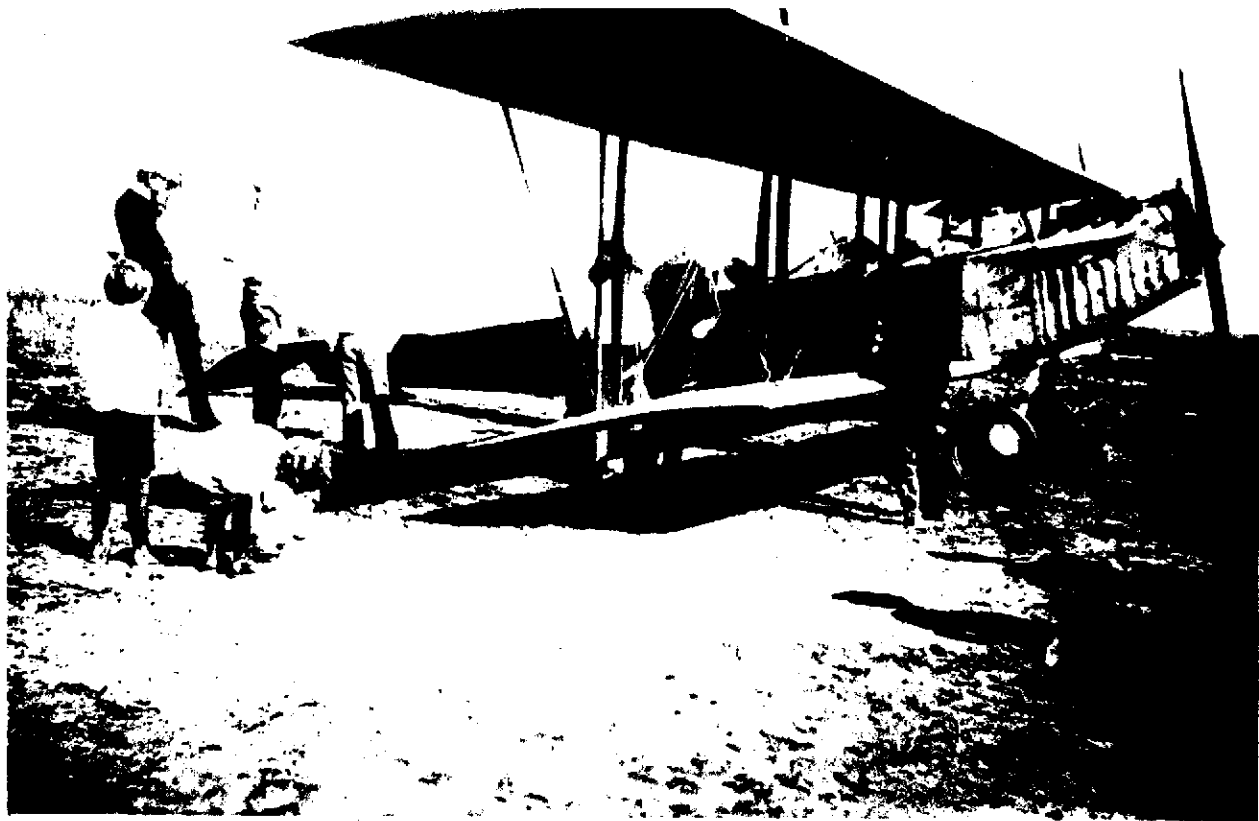
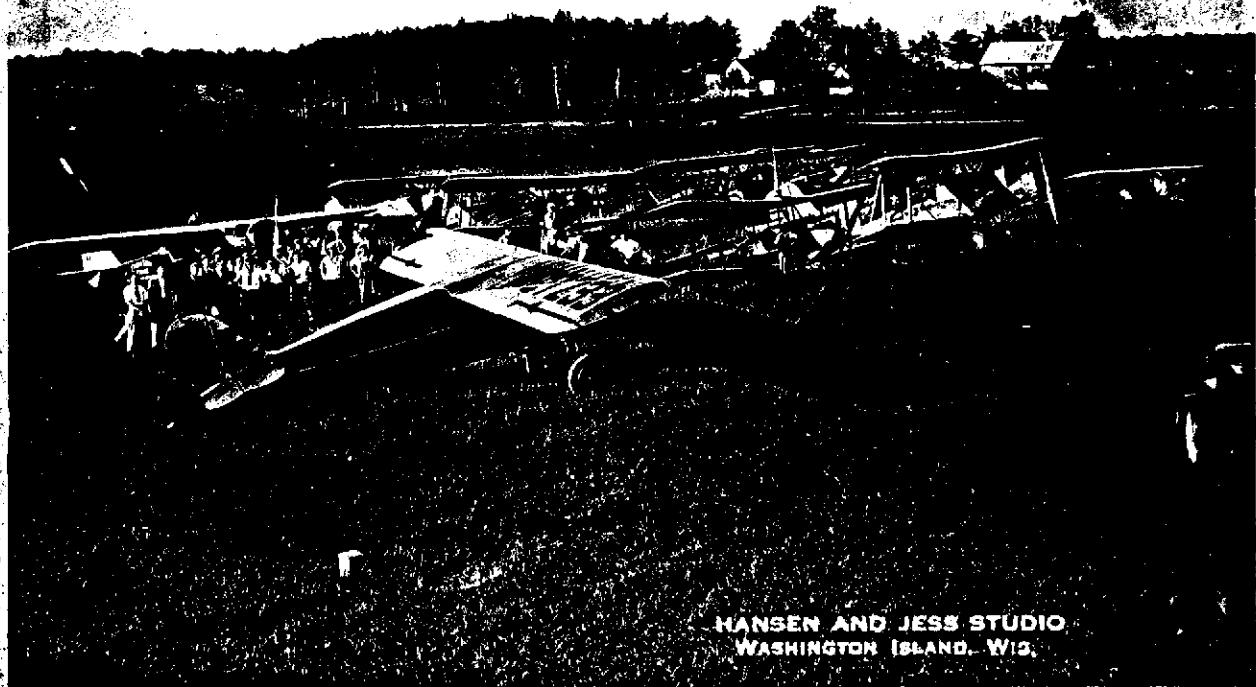


B11 # F12



OX5 JENNY





HANSEN AND JESS STUDIO
WASHINGTON ISLAND, WIS.

"My First Aeroplane"

For an account of what one small boy felt on hearing and seeing his first plane, read the top three paragraphs on the left.

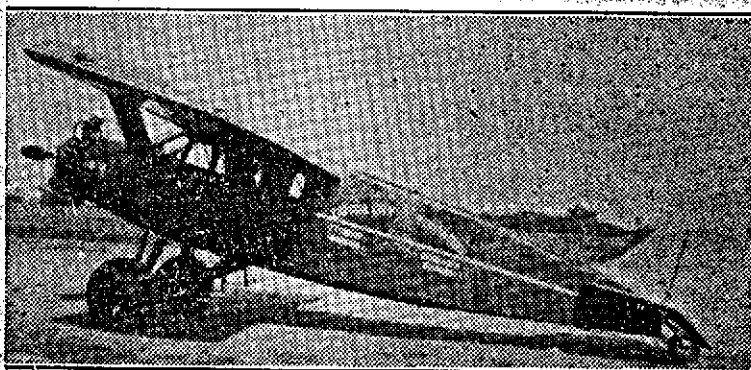
Pictured is a CURTISS JENNY, the first plane to land on Washington Island.

The Island Reporter

Vol. 1

Washington Island, Wis., Thursday, June 8, 1933.

No. 35



FIRST WASHINGTON ISLAND OWNED PLANE

TWO LOCAL YOUTHS HAVE NARROW ESCAPE

Two local youths, Leroy Einarson and Warren Richter, had a thrilling experience last week when their small skiff sank about a half mile off shore and they were forced to swim to safety.

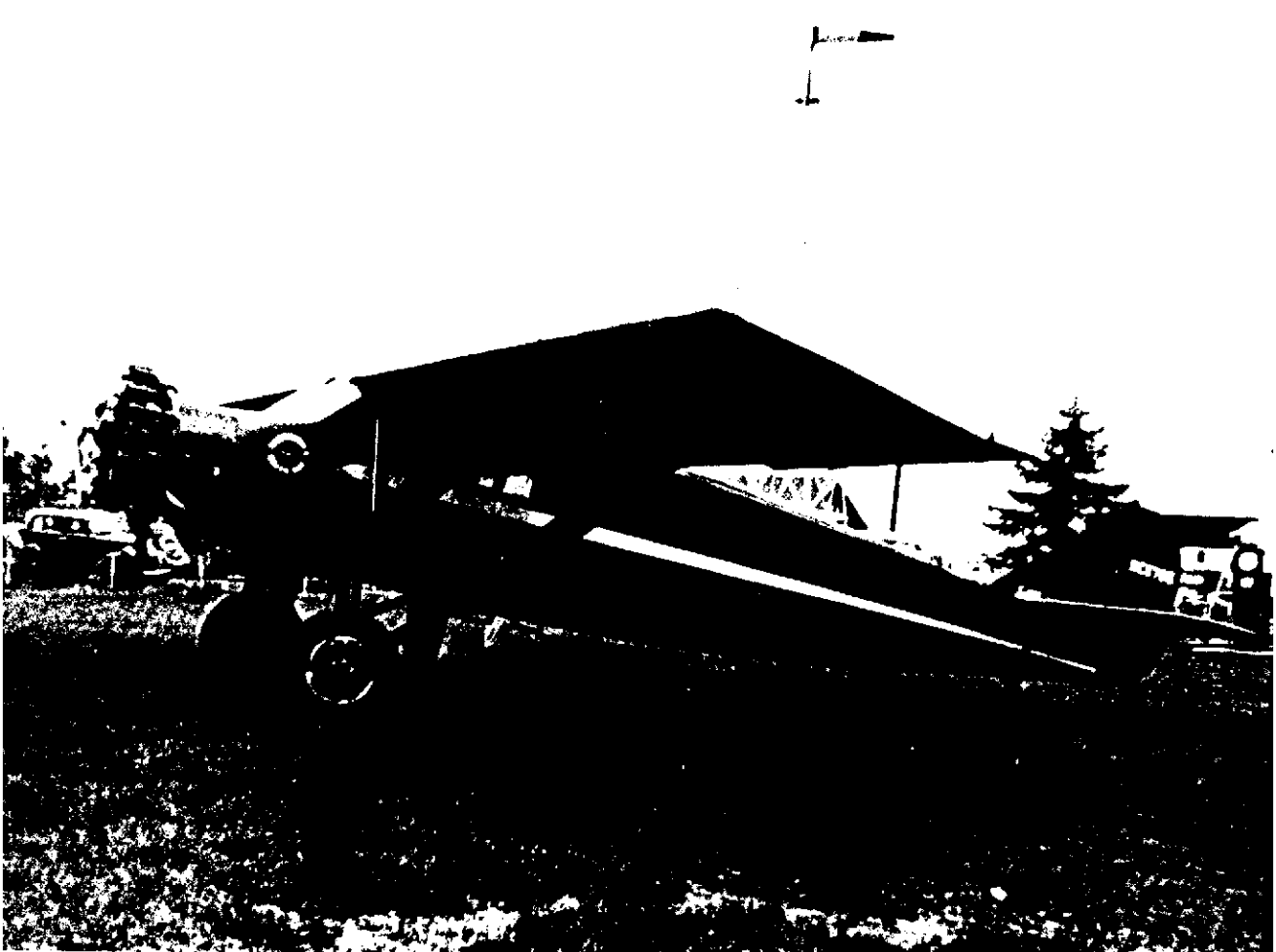
A big sea was rolling and while the boys were lifting a net they had set out in the lake, a huge wave broke over the stern of the boat sinking it. Thinking they might keep the skiff afloat they threw the box of nets over board but this did not help them any. Both were wearing leather coats and boots and were unable to shake them off until they had reached the shore, a swim of over a half mile. Had it not been for their ability to swim under the

To Claude Cornell, local aviator goes the honor of owning the first plane on the Island.

The plane, a Stintson Jr., is a four place cabin monoplane equipped with a 125 hp. air cooled, dual ignition Kinner motor giving her a speed of 115 mph. Other equipment consist of dual control, brakes, air starter and two heaters. It is most attractively finished in black and gold.

The "Washington Island" as the plane has been appropriately christened, is fully licensed at present and will be periodically inspected by the Secretary of Commerce.

handicap of soaked clothing and of boating a heavy sea, it is altogether probable that the boys would have met with tragedy.



1938 - plane Wally used for flights between Green Bay and
Washington Island. Note logo in front of cockpit.

Plane Arntzen used in 1938 to transport passengers three times weekly from Green Bay to Washington Island. Note logo at front of plane behind motor.

Source: Jon Thorin

1117 F12